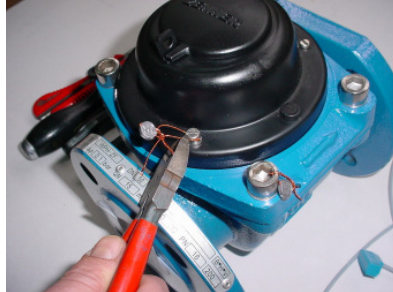


## Installation instructions for the Reed pulser with Woltman meter ZF series



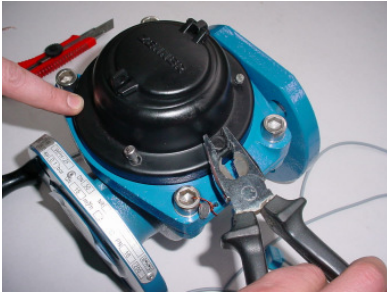
You need: Woltman meter, pulser, screw driver, engineers pliers, cutter, side cutting pliers



Destroy the cap sealing wire. (CAUTION: Don't destroy the main seal!)



Screw out three screws and take off the cap. You will need the screws later for the installation.



Take out the strain relief using the engineers pliers and by turning it 90° before pulling out



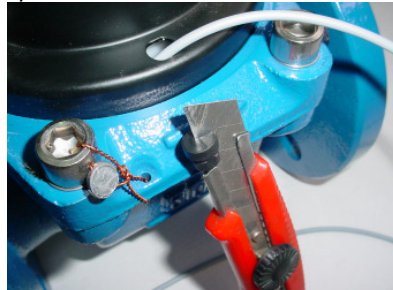
After removing the cap insert the pulser into the desired reed pulser slot.



Insert the loose pulser cable end through the strain relief hole in the cap



Dismantle the strain relief...



...and cut off the thin upper part, where the cable will go through



Assemble the strain relief around the cable and mount it back.



You can secure the cap against opening with new sealing wire

Turn the strain relief 90° to fix it again in the cap and fix the cap again with the three screws.