

MeiStream Plus

Class C Bulkmeter for cold potable water DN 40...150 PN 16



Main characteristics

- Meter with MID pattern approval acc. to annex MI001
- Exchangeable metrological unit with MID pattern approval acc. to annex MI001
- Unique measuring range; $Q_3/Q_1 \geq 315$ in horizontal installation
- High overload capability
- No straight inlet length necessary (U0D0 acc. to OIML R49 and EN 14154)
- Meter body in short (WP) and long (WS) overall length acc. to DIN 19625 and EN 14154 available
- Meter can be submerged; protection class IP68
- Used materials are temperature resistant up to 70 °C
- Register prepared for HRI-Mei pick-up
- Use of optical pulsers type OD is still possible

Applications

- Measurement for billing of cold potable water up to 50 °C
- Measurement of medium and high flowrates
- Measurement of low flow e. g. in light load periods
- For leakage control

Available options

- HRI-Mei factory mounted
- Version for use in hazardous area
- ¼" pressure monitoring port
- Encoder register with different data protocols

Approval Mark

Meter cpl. and exchangeable metrological unit

Marking CE M-XX* 0102

DE-09-MI001-PTB 012

* year of production

Performance Data

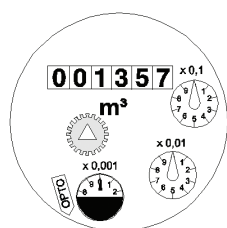
Metrological Data acc. to Manufacturers Values

| | Size | DN | 40 | 50 | 65 | 80 | 100 | 150 |
|------------------|--|-------------------|------|------|-------|------|-------|------|
| Q ₅ | Max. Peak Flow | m ³ /h | 50 | 55 | 60 | 120 | 160 | 400 |
| Q ₃ ' | Continuous Flow | m ³ /h | 30 | 35 | 40 | 63 | 100 | 250 |
| Q ₂ | Transitional Flowrate horizontal acc. to MID | m ³ /h | 0.13 | 0.13 | 0.16 | 0.25 | 0.4 | 0.63 |
| Q ₁ ' | Minimum Flow horizontal | m ³ /h | 0.08 | 0.07 | 0.1 | 0.13 | 0.2 | 0.35 |
| | Starting Flow | m ³ /h | 0.03 | 0.03 | 0.035 | 0.04 | 0.065 | 0.12 |

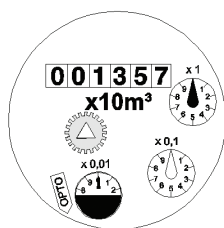
Metrological Data acc. to 2004/22/EC (MID)

| | Size | DN | 40 | 50 | 65 | 80 | 100 | 150 |
|--------------------------------|--|-------------------|-------|-------|------|-------|------|-------|
| Q ₄ | Overload Flowrate acc. to MID | m ³ /h | 31.25 | 31.25 | 50 | 78.75 | 125 | 312.5 |
| Q ₃ | Permanent Flowrate acc. to MID | m ³ /h | 25 | 25 | 40 | 63 | 100 | 250 |
| Q ₂ | Transitional Flowrate horizontal acc. to MID | m ³ /h | 0.13 | 0.13 | 0.16 | 0.25 | 0.4 | 0.63 |
| Q ₁ | Minimum Flowrate horizontal acc. to MID | m ³ /h | 0.08 | 0.08 | 0.1 | 0.16 | 0.25 | 0.4 |
| Q ₃ /Q ₁ | max. Ratio | | 315 | 315 | 400 | 400 | 400 | 630 |
| Q ₃ /Q ₁ | Standard Marking | | 315 | 315 | 315 | 315 | 315 | 315 |
| Δp | Headloss at Q3 acc. to EN 14154 | bar | 0.09 | 0.08 | 0.17 | 0.07 | 0.16 | 0.14 |

Dial



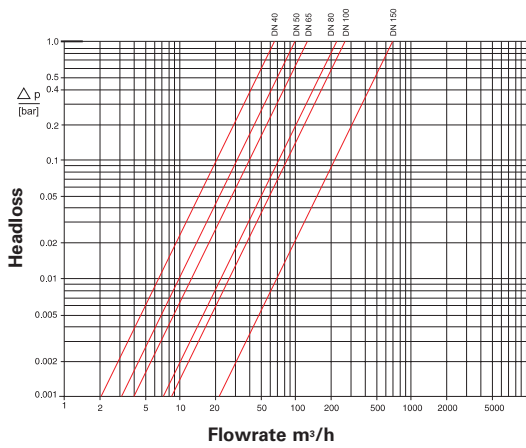
DN 40...100



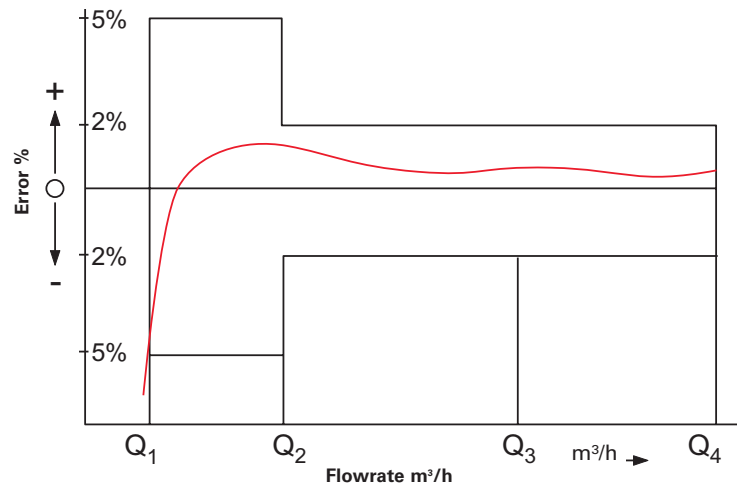
DN 150

| Nominal diameter DN | Smallest reading m ³ | Max. reading m ³ |
|---------------------|---------------------------------|-----------------------------|
| 40 ... 100 | 0.0005 | 999,999.999 |
| 150 | 0.005 | 9,999,999.99 |



Typical Headloss





Typical Error Curve



Pulse Values

| Pulsar Type | | DN 40 ... 100 | Pulse Value | DN 150 |
|-------------------------------|---|-------------------------------------|-------------|----------------------------------|
| HRI-Mei (Leaflet see LS 8400) |  | 0.01; 0.05; 0.1 or 1 m ³ | | 0.1; 0.5; 1 or 10 m ³ |
| OD 01 (Leaflet see LB 8300) |  | 0.001 m ³ | | 0.01 m ³ |
| OD 03 (Leaflet see LB 8300) | | 0.01 m ³ | | 0.1 m ³ |

Installation

| | | |
|------------|------------|---|
| Pipe | horizontal |  |
| Meter head | upwards |  |

Installation Requirements

- Unrestricted straight pipe upstream 0 x DN
- No abrupt restrictions directly downstream of the meter

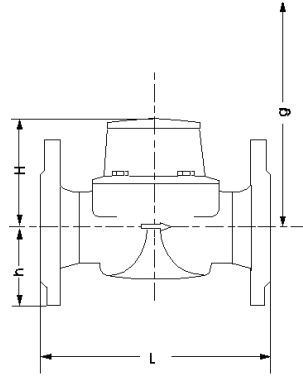
Materials

| | |
|-------------------------------------|--------------------------|
| Body | Cast iron |
| Measuring element | Plastic |
| Rotor | Plastic |
| We also use the following materials | Brass Stainless steel |

Available Lengths

| Nominal diameter | | 40 | 50 | 65 | 80 | 100 | 150 |
|------------------------------------|----|-----|--------------|-----|--------------|--------------|-----|
| Overall length L WS (DIN / ISO) | mm | | 270 / 300 | 300 | 300 / 350 | 360 / 350 | 500 |
| Overall length L WP (DIN / ISO) | mm | 220 | 200 | 200 | 225 / 200 | 250 | 300 |

Dimension Picture



Dimension and Weights PN 16

| Nominal diameter | | | 40 | 50 | 50 | 50 | 65 | 65 | 80 | 80 |
|------------------|--------------------|------|-----|-----|-----|-----|------|------|------|------|
| Dimensions | Overall length | L mm | 220 | 200 | 270 | 300 | 200 | 300 | 200 | 225 |
| | Height | H mm | 120 | 120 | 120 | 120 | 120 | 120 | 150 | 150 |
| | | h mm | 69 | 73 | 73 | 73 | 85 | 85 | 95 | 95 |
| | Dismantling height | g mm | 200 | 200 | 200 | 200 | 200 | 200 | 270 | 270 |
| Weights | Meter cpl. | kg | 7.5 | 7.8 | 9.6 | 9.9 | 10.1 | 12.0 | 13.8 | 14.2 |
| | Measuring insert | kg | 1.5 | 1.5 | 1.5 | 1.5 | 1.5 | 1.5 | 3.2 | 3.2 |
| | Body | kg | 6.0 | 6.3 | 8.1 | 8.4 | 8.6 | 10.5 | 10.6 | 11.0 |

| Nominal diameter | | | 80 | 80 | 100 | 100 | 100 | 150 | 150 |
|--------------------|------------------|------|------|------|------|------|------|------|------|
| Dimensions | Overall length | L mm | 300 | 350 | 250 | 350 | 360 | 300 | 500 |
| | Height | H mm | 150 | 150 | 150 | 150 | 150 | 177 | 177 |
| | | h mm | 95 | 95 | 105 | 105 | 105 | 135 | 135 |
| Dismantling height | g mm | 270 | 270 | 270 | 270 | 270 | 356 | 356 | |
| Weights | Meter cpl. | kg | 16.3 | 17.7 | 18.2 | 20.0 | 20.2 | 35.9 | 44.2 |
| | Measuring insert | kg | 3.2 | 3.2 | 3.2 | 3.2 | 3.2 | 5.9 | 5.9 |
| | Body | kg | 13.1 | 14.5 | 15.0 | 16.8 | 17.0 | 30.0 | 38.3 |

Order Information

MeiStream Plus, DN 50, T50, PN16
 Drilling EN 1092 PN16
 Length 270 mm
 mechanical register / m³
 with MID conformity

Type
 Size
 Max. medium temperature
 Nominal pressure
 Drilling pattern
 Body length
 Register type / unit
 Approval standard



qualityaustria
 Succeed with Quality

Certified according to ISO 9001
 Quality Management System Quality Austria Reg.no. 3496/0



UK & Ireland Enquiries

Sensus UK Systems Ltd, International House, Southampton International Business Park, George Curl Way,
 Southampton SO18 2RZ UK
 T: +44 (0) 1794 526100 F: +44 (0) 1794 526101 Email: info.gb@sensus.com www.sensus.com

International Enquiries

Sensus GmbH Hannover, Meineckestraße 10, D-30880 Laatzen Germany
 T: +49 (0) 5102 74-0 F: +49 (0) 5102 74-3341 Email: info.int@sensus.com www.sensus.com